

### Importing a data file.

Left click onto **Import Dataset** select 'from Text File...' (Figure 1) then go to where the data file has been saved and following prompts select the file to import (Figure 2). The 'Import Dataset' will come up (Figure 3). Check that the data looks correct and select 'Yes' for 'Headings' if it has not been selected. The date will appear in the Pane of the 'Source on Save' (Figure 4) note that the name of the data file on the far right of the Pane. Also notice under the name it shows '10 observations of 3 variables'.



Figure 1 The Import Dataset tab, click to select Text file

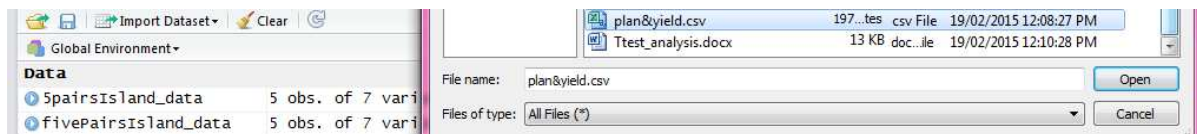


Figure 2. Selecting the csv file to import

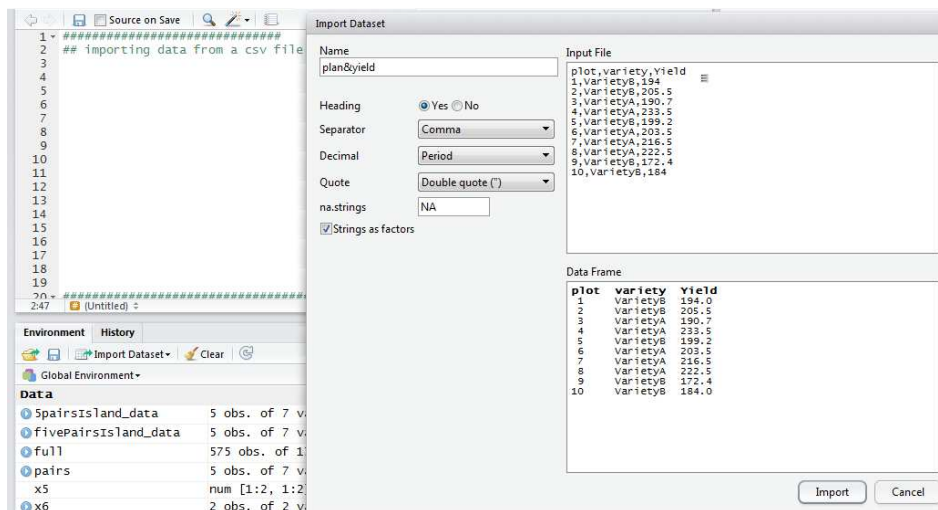
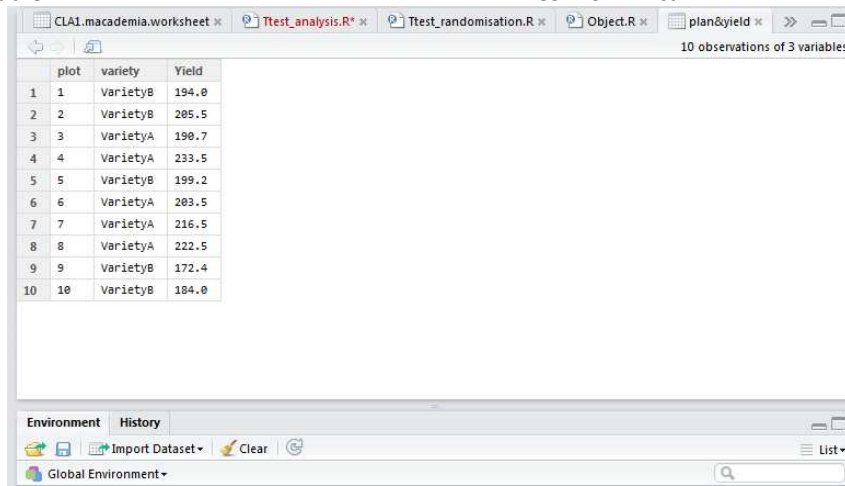


Figure 2 The 'Import Dataset' window assisting you in whether there is a Header and the type of separators



The screenshot shows the RStudio environment with a data table displayed. The table has 10 rows and 3 columns: 'plot', 'variety', and 'Yield'. The data is as follows:

	plot	variety	Yield
1	1	VarietyB	194.0
2	2	VarietyB	205.5
3	3	VarietyA	190.7
4	4	VarietyA	233.5
5	5	VarietyB	199.2
6	6	VarietyA	203.5
7	7	VarietyA	216.5
8	8	VarietyA	222.5
9	9	VarietyB	172.4
10	10	VarietyB	184.0

The RStudio interface also shows several open tabs at the top: 'CLAI1.macademia.worksheet', 'Ttest\_analysis.R', 'Ttest\_randomisation.R', 'Object.R', and 'plan&yield'. The bottom panel shows the 'Environment' and 'History' tabs, with 'Global Environment' selected.

Figure 4. The data set imported